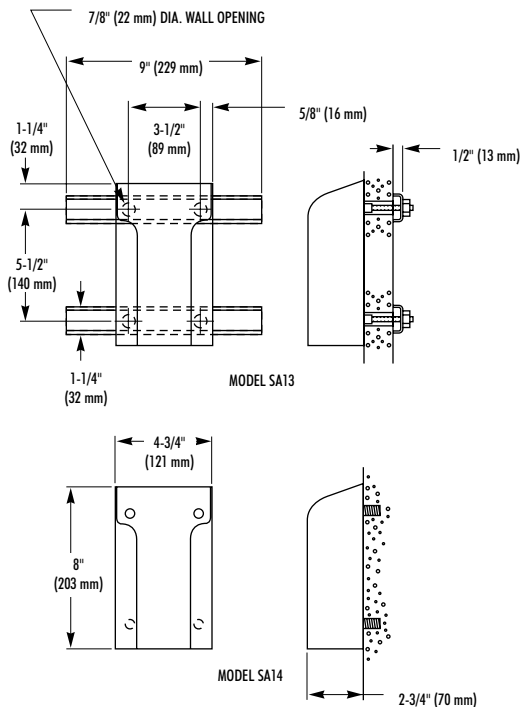


# SECURITY TOILET TISSUE HOLDER

- Model SA13 – Chase Mounted
- Model SA14 – Front Mounted
- Model SA15 – Partition Mounted



**MODEL SA13**  
**SA14**  
**SA15**

## CONSTRUCTION:

Tissue Holder is fabricated of type 304 (18-8), 14 gauge stainless steel with exposed surfaces in architectural satin finish. Interior is satin glass blast finish. All welds and edges are ground smooth and corners are rounded.

- Model SA13:** Back of holder has welded anchor nuts to receive threaded studs (provided). Back plate of 11 gauge die-formed galvanized steel.
- Model SA14:** Unit supplied with 1/4" - 20 x 1" L torx-head screws for installation to wall anchors (not included).
- Model SA15:** Unit supplied with chrome plated brass thru-bolts for attaching to 1" thick partitions. Sufficient adjustment for back-to-back installation.

WALL THICKNESS (must check one)	
<input type="checkbox"/> Up to 1"	<input type="checkbox"/> 1" to 6"
<input type="checkbox"/> Over 6", Specify Thickness: _____	
WALL TYPE (must check one)	
<input type="checkbox"/> Concrete	<input type="checkbox"/> Block
<input type="checkbox"/> Steel	<input type="checkbox"/> Other: _____

Document No. 9205

This information is subject to change without formal notice.  
1299RSSCJ



P.O. Box 309, Menomonee Falls, WI 53052-0309  
Phone 1-800-BRADLEY FAX 262-253-4161  
Web Site: <http://www.bradleycorp.com>  
Technical Information Fax Service: 1-800-BRADFAX