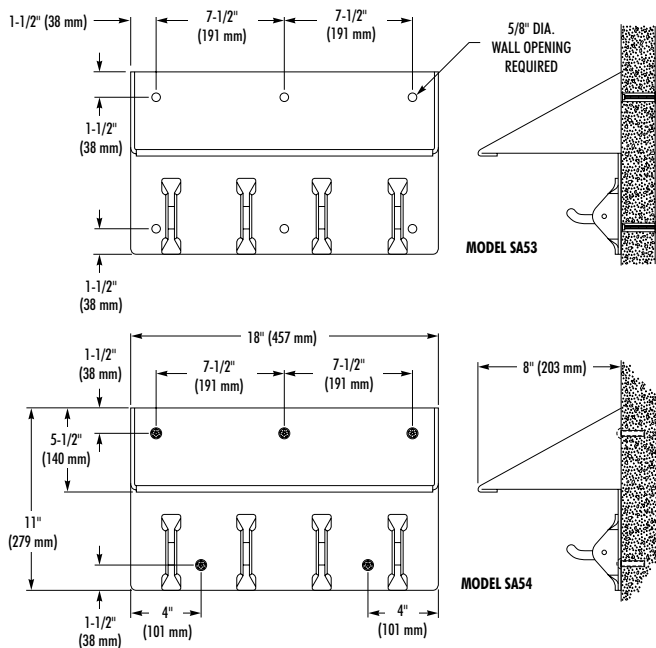
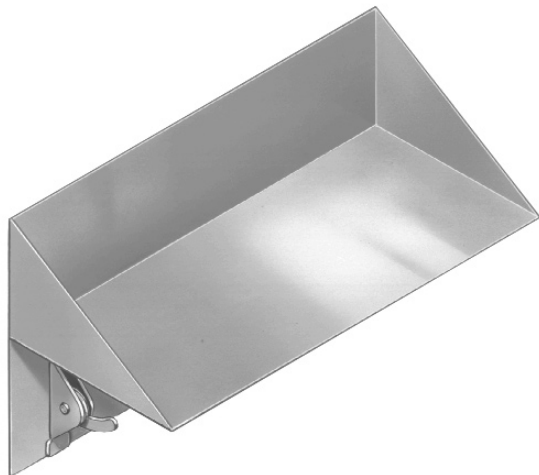


SECURITY BOOKSHELF WITH CLOTHES HOOKS

- Model SA53 – Chase Mounted
- Model SA54 – Front Mounted



MODEL SA53 SA54

CONSTRUCTION:

Bookshelf and Backplate is fabricated of type 304 (18-8), 14 gauge stainless steel with exposed surfaces in architectural satin finish. Shelf interior is glass blast satin finish. All seams are heliarc welded and ground smooth.

SAFETY HOOK:

Fabricated of type 304 (18-8), 11 gauge stainless steel bracket with 7 gauge stainless steel hook. Hook is secured to bracket by tamper-resistant torx-head screw and rubber friction washers. Tension adjustment made by use of torx driver (available as option.)

- MODEL SA53:** Backplate has welded anchor nuts to receive 1/4" - 20 studs (provided). Nuts and washers included with unit.
- MODEL SA54:** Unit supplied with 1/4" - 20 x 1" L torx-head screws for installation to wall anchors (not included).

WALL THICKNESS (must check one)	
<input type="checkbox"/> Up to 1"	<input type="checkbox"/> 1" to 6"
<input type="checkbox"/> 8"	<input type="checkbox"/> Over 8", Specify Thickness: _____
WALL TYPE (must check one)	
<input type="checkbox"/> Concrete	<input type="checkbox"/> Block
<input type="checkbox"/> Steel	<input type="checkbox"/> Other: _____

Document No. 9290

This information is subject to change without formal notice.
1299RSCJ



P.O. Box 309, Menomonee Falls, WI 53052-0309
Phone 1-800-BRADLEY FAX 262-253-4161
Web Site: <http://www.bradleycorp.com>
Technical Information Fax Service: 1-800-BRADFAX