



**AMERICAN SPECIALTIES, INC.**

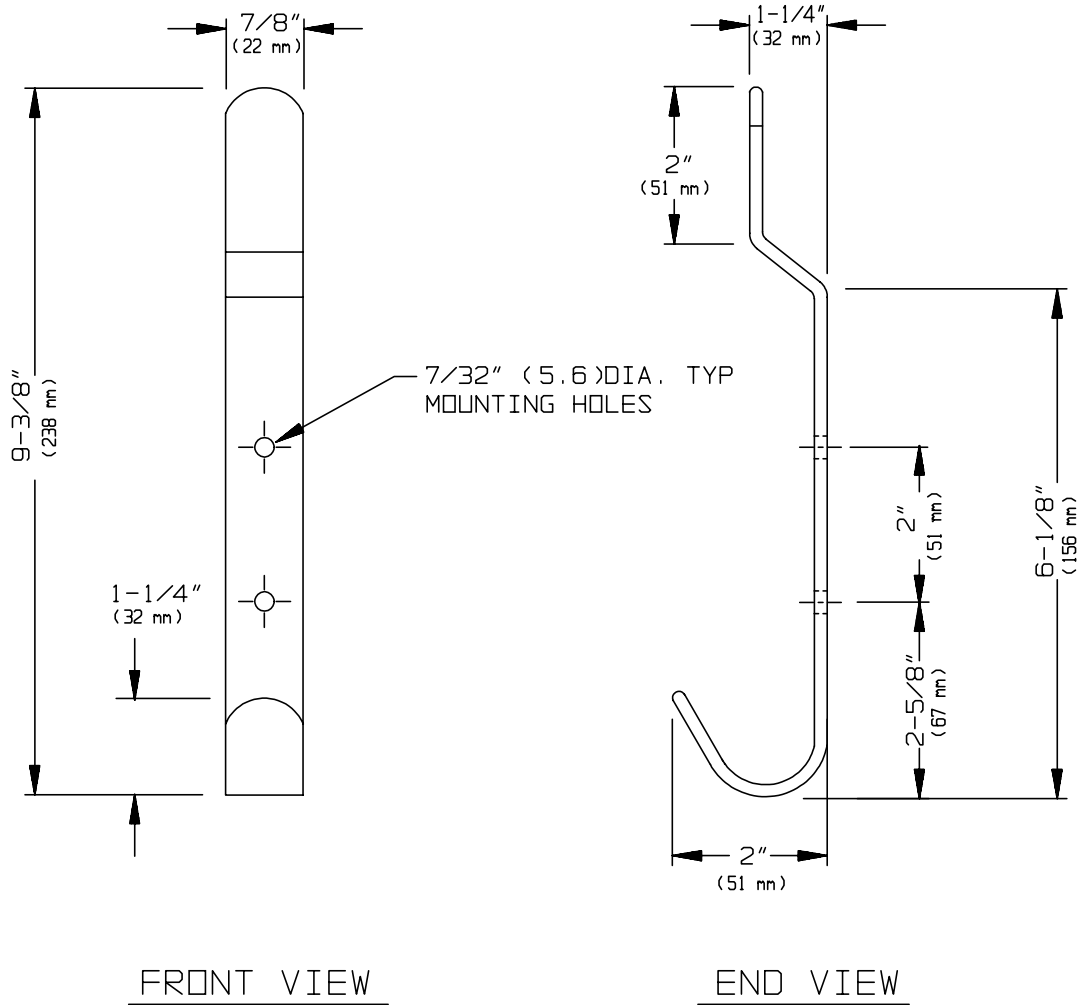
441 Saw Mill River Road, Yonkers, NY 10701 (914) 476-9000

MODEL No: 1306

ISSUED: 1-87

REVISED: 9-04

**HEAVY DUTY RAG AND TOWEL HOOK**



FRONT VIEW

END VIEW

**SPECIFICATION**

Heavy Duty Rag and Towel Hook shall be fabricated of alloy 18-8 stainless steel, type 304, 11 gauge with N°4 satin finish and shall be protected during shipment with a PVC film easily removable after installation.

**Heavy Duty Rag and Towel Hook shall be Model N° 1306 as manufactured by American specialties, Inc., 441 Saw Mill River Road, Yonkers, New York 10701-4913**

**INSTALLATION**

For general utility, mount hook 70" (1778mm) above finished floor (AFF) from bottom of hook. Surface mount and secure to wall with two (2) N°10 self-tapping screws (by others) through mounting holes provided. For compliance with ADA Accessibility Guidelines, install unit so that top of hook is 54" (1372mm) maximum AFF if clear floor side reach access is provided or 48" (1219mm) maximum AFF if clear floor forward reach is provided or 46" (1168mm) maximum AFF if side reach over obstruction is only provided (i.e. vanity).

**OPERATION**

Rags and towels are placed on the hooks as needed.

Accessory Specialties

AMERICAN DISPENSER

Desert Ray Products

**WATROUS** INC.